



EPOTEK SELF-LEVELLING (TRA)

TRANSPARENT SELF-LEVELLING EPOXY
FORMULATION SPECIFIC FOR
ARCHITECTURAL RESIN FLOORING

DESCRIPTION

EPOTEK SELF-LEVELLING TRANSPARENT is a bi-component self-levelling solvent free epoxy mortar specifically designed for industrial resin flooring.

COMPOSITION

bi-component product, based on solvent-free epoxy resins and appropriately formulated to be UV-resistant

GENERAL CHARACTERISTICS

EPOTEK SELF-LEVELLING TRA is specific for the realization of decorative - architectural floors in transparent resin 2 - 3 mm thick, characterized by excellent chemical/mechanical performance

Its characteristic is:

- Resistance to intense pedestrian traffic and wheeled vehicles;
- Worm resistance;
- Resistance to wear;
- Resistance to contact with many acidic and alkaline agents;
- Easy decontamination;
- Excellent appearance.

EPOTEK SELF-LEVELLING TRA has many applicability advantages:

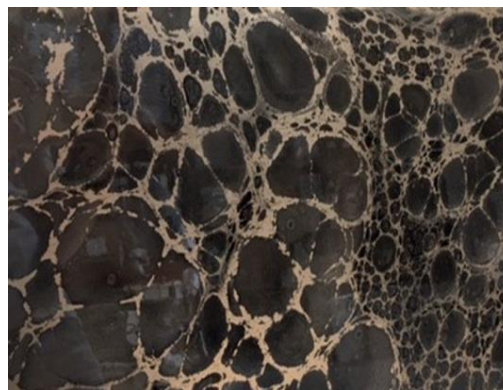
- it is easy and quick to implement,
- it is self-levelling,
- it does not allow withdrawal,
- it is suitable for covering different types of support: cement, stoneware, tiles, etc..

FIELDS OF APPLICATION

EPOTEK SELF-LEVELLING TRA is specific for the implementation of floor coverings in industrial and civil environments: manufacturing departments, storage areas, corridors and wherever high resistance is required: warehouses, shops, laboratories, canteens, exhibition halls, hospitals, etc.

TECHNICAL CHARACTERISTICS

Color	Transparent
Dry residue by weight (%)	98 ± 2
Mix ratio by weight A : B	20 : 10
Pot-life (working time) at 20 ° C	30-35min
Compressive strength	75,5 Mpa
Bending resistance	25.5 Mpa
Traction strength	14.0 Mpa



Elastic modulus (DBV)	6700 N / mm ²
Lengthening at break (%)	1,5-1,7
Application temperature	from + 7 ° C to + 35 ° C
Flammability	non-flammable

PREPARATION

The components are supplied in two separate packaging units:

A - Base

B - catalyzer

Mix components A and B separately in the respective packaging; then pour component B into component A and mix for 4-5 minutes until the products are completely homogenized.

Then add component C and continue mixing until the mixture is completely homogenized.

Avoid taking partial quantities from the packs to prevent any errors in the ratio that would result in failure or incomplete hardening.

Mixing must always be carried out mechanically at low speed (not more than 600 rpm).

After mixing the components, the product is ready for use. No dilution necessary.

IMPLEMENTATION

The product must be applied on a dry substrate (to avoid bubbles and detachments), clean and degreased.

PACKAGING

Component A = 20 kg (resin)

Component B = 10 kg (hardener)



TEKNA CHEM S.p.A.

Stabilimento: Renate (MB) Via Sirtori snc – z.i. 20838
Tel. +39 (0)362.91.83.11 Fax: +39 (0)362.91.93.96
E-mail: info@teknachem.it Web: www.teknachem.it

The information contained in this data sheet, while representing the current state of knowledge, do not release the user from the accurate preliminary tests in their conditions of employment and exercise. We assume no responsibility for the improper use of the product.



TECHNICAL DATA SHEET

**STORAGE**

In original, undamaged packaging, sheltered from excessive heat, the product will last for about 12 months.

WARNING

Under normal conditions of use, the product is not harmful to operators involved in its handling. Do not eat, drink or smoke during application, use protective clothing such as gloves, goggles and face mask.

The information contained in this document is, to the best of our knowledge, accurate and exact, but each recommendation and suggestion given is without any guarantee, since the use conditions are not under our direct control.

In case of doubt, it is always advisable to carry out preliminary tests or consult our technical department.

**TEKNA CHEM S.p.A.**

Stabilimento: Renate (MB) Via Sirtori snc – z.i. 20838
Tel. +39 (0)362.91.83.11 Fax: +39 (0)362.91.93.96
E-mail: info@teknachem.it Web: www.teknachem.it

The information contained in this data sheet, while representing the current state of knowledge, do not release the user from the accurate preliminary tests in their conditions of employment and exercise. We assume no responsibility for the improper use of the product.